

State of Wyoming Corner Record

(In compliance with the CORNER PERPETUATION AND FILING ACT, Wyoming Statutes, 1997 Section 33-29-140, et. seq., and the Rules and Regulations of the Board of Professional Engineers and Professional Land Surveyors)

Reverse side of this form may be used if more space is needed.

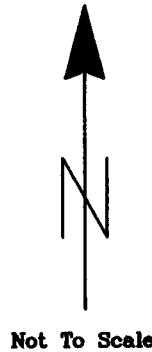
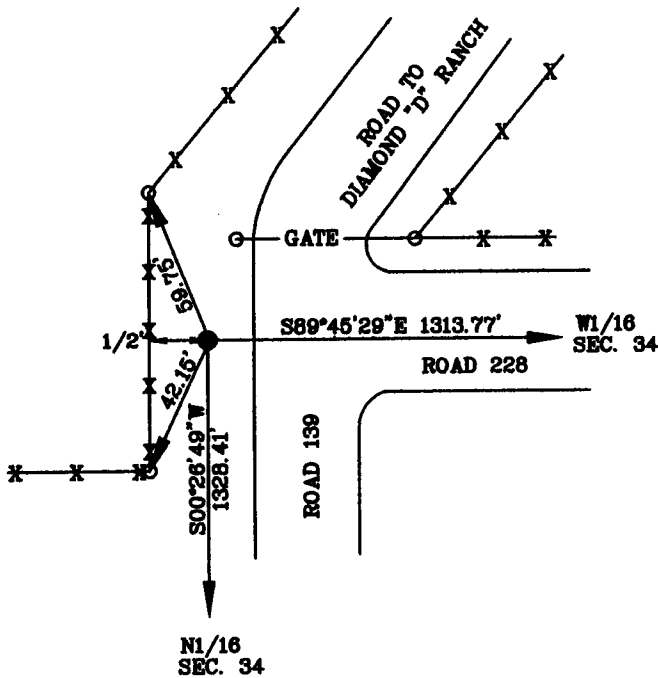
Record of original survey and citation of source of historical information (If corner is lost or obliterated), Description of corner monumentation evidence found and/or monument and accessories established to perpetuate the location of this corner. Sketch of relative location of monument, accessories and reference points with the course and and distance to adjacent corner(s) (If determined in this survey). Method and rationale for re-establishment of lost or obliterated corner.

RECOVERED A 5/8" REBAR AND ALUMINUM CAP. LOCATED P.K. NAILS IN FENCE CORNERS AS STATED BY ROGER H. KRUM LS 2613 ON FEBRUARY 6, 2008.

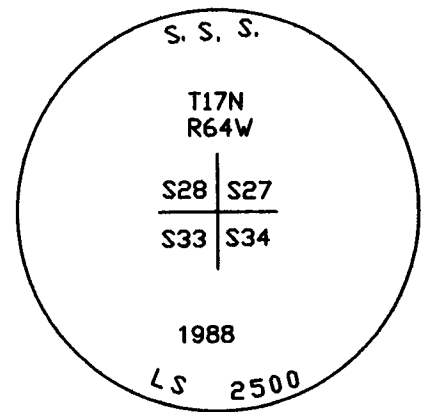
LAT = 41°24'16.530"N

LONG = 104°32'48.838"W

Monument Location



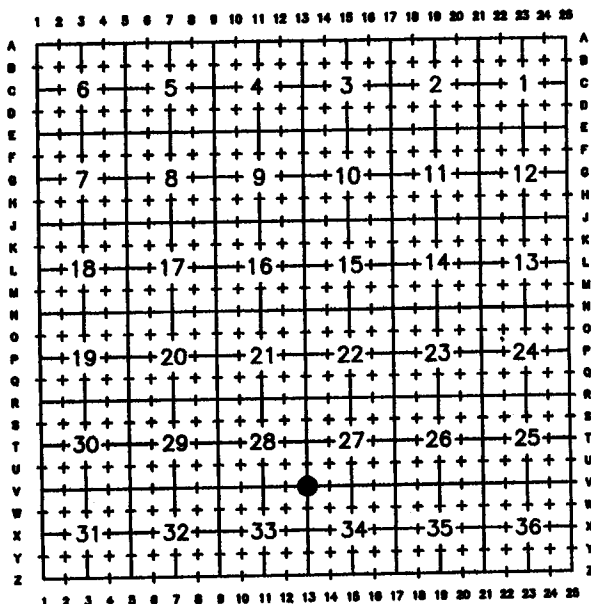
Monument Inscription



LATITUDE AND LONGITUDE NOT REFERENCED TO CORS STATION

Date of Field Work: 10/6/2010 Office Reference: 13985

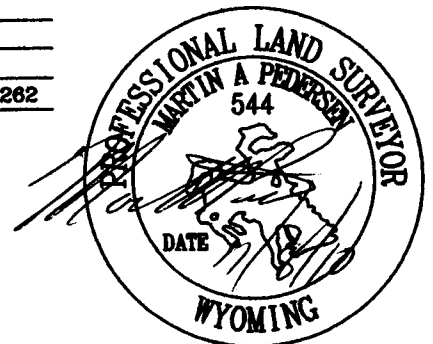
Cross Index Diagram



Firm/Agency, Address

WLC Engineering, Surveying, & Planning
 1015 Harshman St.
 P.O. Box 1104
 Rawlins, Wyoming 82301
 Telephone Number: (307) 324-5262

This corner record was prepared by me or under my direction and supervision.



RECORDED 11/10/2010 AT 3:43 PM REC# 556940 BK# 2192 PG# 1158
 DEBRA K. LATHROP, CLERK OF LARAMIE COUNTY, WY PAGE 1 OF 1

Corner Name NW Section 34, T 17 N, R 64 W, 6th P.M. Cross-Index No.: V-13
 County: LARAMIE, Wyoming